

imagine®
floors by Airstep.

**AquaDefend
Hard Flooring Underlay**

ACCESSORIES



What is AquaDefend?

AquaDefend is a 200 micron IXPE closed-cell foam with an in-built moisture barrier that provides superior protection against subfloor moisture. Aside from being superior in moisture protection, it is also a proactive underlay to reduce noise transmission and provide efficient thermal benefits.

Open cell vs closed cell underlay:

AquaDefend is a closed-cell IXPE foam underlay. This construction is 100% waterproof and inhibits the growth of mould and mildew, therefore assisting in improving indoor air quality. Closed-cell construction often comes at a higher price point than open-cell underlay, however, it also offers enhanced longevity and performance.

What does the Sd value mean?

Sd value refers to the ability of an underlay to inhibit moisture transference from the subfloor to your floating floor. The minimum standard to achieve this is a value of 75.

As a superior moisture barrier focused on minimising the transference of vapour and moisture from the subfloor through to your floor, AquaDefend has an Sd value of 290 - almost four times the required Sd rating.

What does the R Rating mean?

The R rating of an underlay refers to how much thermal insulation an underlay provides. The higher the R rating, the more comfort an underlay will provide in terms of temperature fluctuations in the space due to loss of heat through the floor.

Thermal properties must always be measured as a system, rather than on a product by product basis. As such, we recommend checking the R rating of your chosen flooring as well.

What is the acoustic rating?

AquaDefend achieves a 5 star acoustic rating when paired with 8mm Laminate flooring. This rating far exceeds the minimum compliance. Acoustics should be measured in-situ to provide an accurate rating, as there are many factors that impact the overall score.



The Watertight Option

Product Code: 2100823

Superior moisture barrier



AquaDefend is a high quality, high density underlay which prevents moisture from rising through the subfloor and causing damage to your floorboards. In addition to providing a highly effective moisture and vapour barrier, AquaDefend also assists in reducing noise pollution within the home and offers thermal benefits.

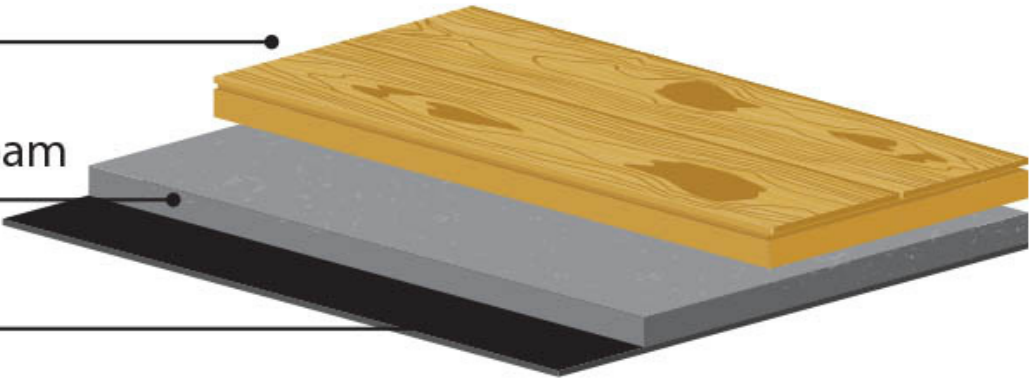
Roll Length (m)	Roll Width (m)	Thickness (mm)	Density (kg/m ³)	Acoustic Performance W.S.I Noise Level [L'nT,w]	Thermal Insulation R Rating (m ² K/W)	Water Vapour Resistance (Sd)
20	1+165mm overlap	2	110	42*	0.05	290

*Tested with 8mm Laminate

Laminate or Timber Floating Floor

IXPE Closed-Cell Foam

Moisture Barrier



AquaDefend is a 200 micron Underlay designed to provide a superior moisture barrier. Suitable for use with both Laminate and Engineered Timber floors, this high quality, high density underlay prevents moisture from rising through the subfloor and causing damage to your floorboards. Besides from been superior in moisture protection it is also a proactive underlay to reduce noise transmission and provide efficient thermal benefits.